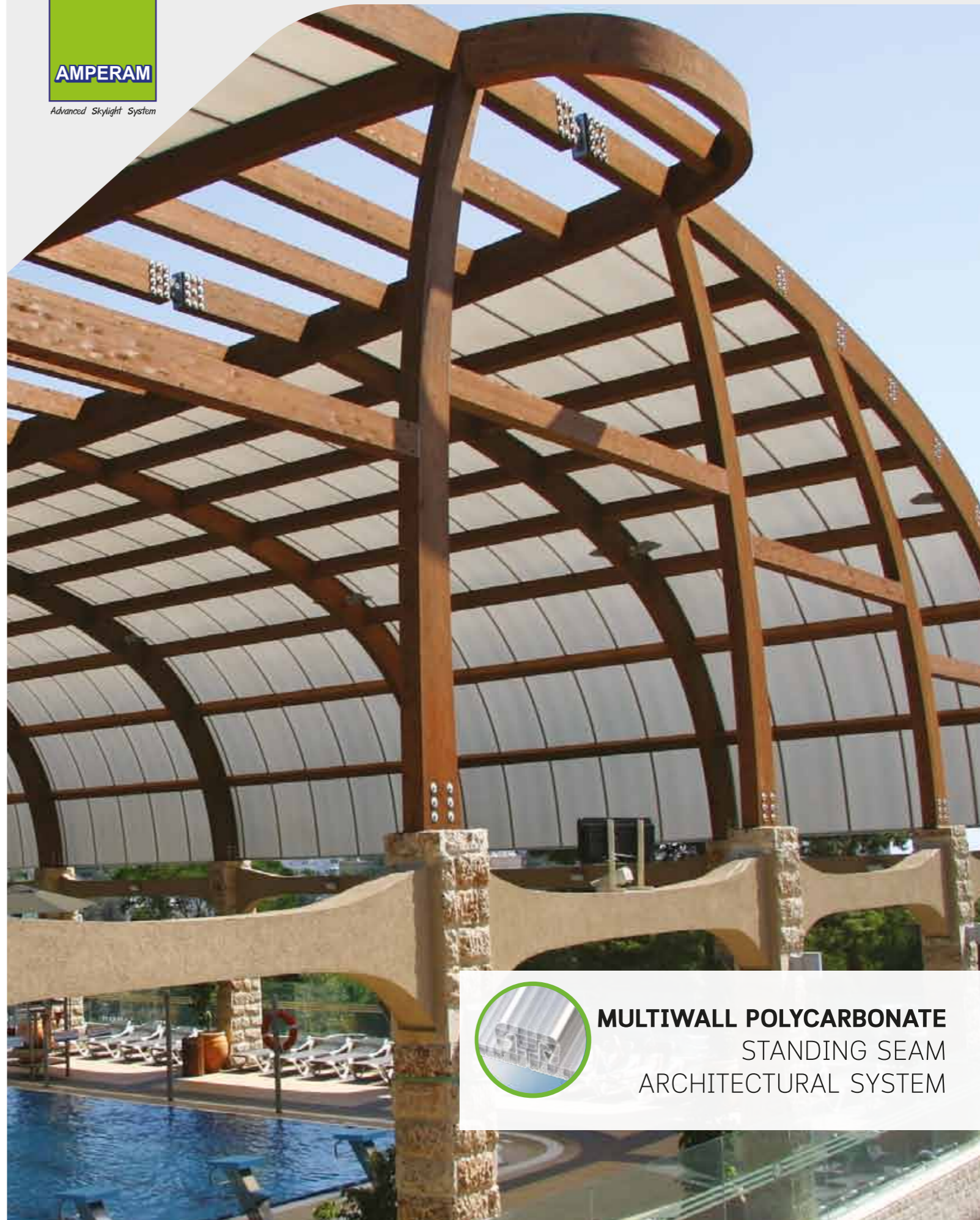


Project References



© Copyright, 06/2020 The data in this publication supersedes previous issues.



MULTIWALL POLYCARBONATE
STANDING SEAM
ARCHITECTURAL SYSTEM



Quality product by
Ampelite World Co.,Ltd. www.ampelite.co.th



AMPPAL Warranty

Type of Warranty	Warranty
Water Non-leaking	20 Years

Remark : Please see full details in original warranty

AmpPAL

02-312-4300
www.ampelite.co.th

Introduction

AMPPAL® is an advanced multiwall polycarbonate panel system that combines proven design, light transmission, thermal insulation and strength. It offers a light weight, expansion free and leak-proof design that withstands very high loads. The system's many advantages make it ideal for long term installations in many types of projects.

Main Benefits

- Withstand very high loads
- Thermal expansion free
- Simple & fast installation
- Leak-proof
- High thermal insulation
- Ideal for curved designs
- Double sides UV protection

Applications

- Architectural structures
- Commercial and Retail
- Sport facilities
- Covered walkways
- Open markets
- Service stations
- Entrances
- Pool covers

Typical Physical Properties

Properties	Method*	Conditions	Units	Value
Density	D-792		g/cm ³	1.2
Heat deflection temperature (HDT)	D-648	Load:1.82 MP	°C	130
Service Temperature-Short term			°C	-50 to+120
Service Temperature-Long term			°C	-50 to+100
Coefficient of linear thermal expansion	D-696		cm/cm°C	6.5x10 ⁻⁵
Tensile strength at yield	D-638	10mm/min	MPa	62
Elongation at break	D-638	10mm/min	%	>80
Impact falling dart	ISO 6603/1		J	40-400
Thermal expansion/contraction rate			mm/m	3

Remark : *ASTM method except where noted otherwise



Panel Dimension

Panel Section



AMPPAL® 10/600

Panel Data	Value
Width	600 mm
Height	25.5 mm
Height with PC-Joiner	35 mm
Weight	1.56 kg/m

Installation

Recommended Spans-for wind load of 0.75 kPa (mm)

Purlin Design

Panel Type	Panel Width	Polycarbonate Joiner	
		Mid-Span	End-Span
AMPPAL 10 mm	600	1,250	950

Rafter Design*

Panel Type	Rafter Center	Polycarbonate Joiner	
		Internal Fasteners	Fasters at Rafter Ends
AMPPAL 10 mm	602	1,250	950

*With max. intervals of T-Fasteners along rafters

Cold-Curving Radius

Panel Type	Minimum Arching Radius (mm)
AMPPAL 10 mm	2,400

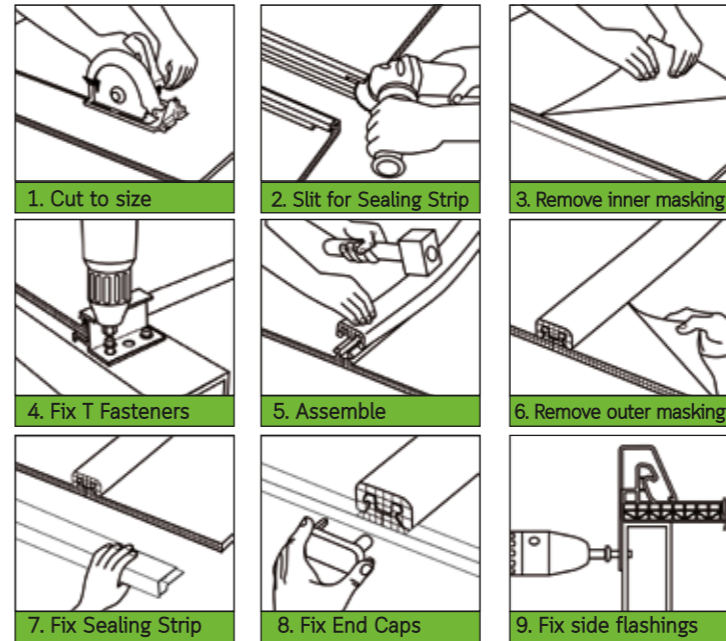
Thermal Insulation

Panel Type	AMPPAL® U-Value [Watts/m ² °C]	R-Value [m ² °C/Watt]
AMPPAL 10 mm	2.10	0.47

Remark : Stock available in Thailand Other size, color required please contact Ampelite World Co.,Ltd.

AMPPAL® Installation

Appropriate slope Min 5 degrees



System Components

Component List	Photo
AMPPAL® - Panel	
PC Joiner	
End Cap	
T Fastener-Stainless	
Self Drilling Screw -SDP 10-16x20 HEX C3 NW @ every purlin	
Sealing Strip-Anodized Aluminium	

Remark :
 - In case a structure is rafter system, please fix the fixing screw on every 700 mm
 - In case a structure is not conformable to the standard, please contact Ampelite Fibreglass (Thailand) for more information required.
 - The proper length should be shorten than 8 metres, in order to avoid its thermal expansion problem.

Color and Panel Section

Color	LT	SC
Solar Control	20%	0.34

Assembly Illustration

