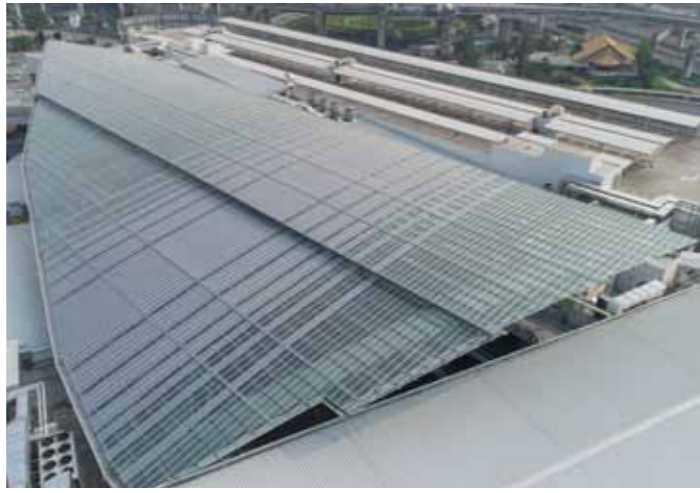
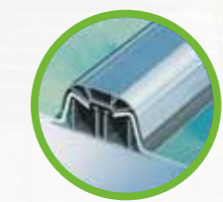


Project References



© Copyright, 042018 The data in this publication supersedes previous issues.



**SOLID POLYCARBONATE
STANDING SEAM
ARCHITECTURAL SYSTEM**



Quality product by
Ampelite Fibreglass (Thailand) Co.,Ltd. www.ampelite.co.th



AMPGLAZE Warranty

Type of Warranty	Warranty
Water Non-leaking	20 YEAR

Remark : Please see full details in original warranty

AmpGLAZE

02-312-4300
www.ampelite.co.th

Introduction

AMPGLAZE® is an architectural glazing system with elegant design and appearance. It offers high versatility, low maintenance and a sustainable design for various architectural challenges. AMPGLAZE® incorporates standing-seam profiling and glazing that enable wide spans and high load resistance. It can be specified in various lengths to match various structures, including flat and curved designs.

Main Benefits

- Glass-like clear appearance
- Standing seam leak-proof performance
- Free thermal expansion
- Caulking and silicone free
- Withstanding high loads
- Easy, fast and safe installation
- Minimal maintenance

Applications

- Architectural structures
- Commercial and Retail
- Sport venues roofing
- Covered walkways
- Open markets
- Service stations
- Entrances
- Pool covers

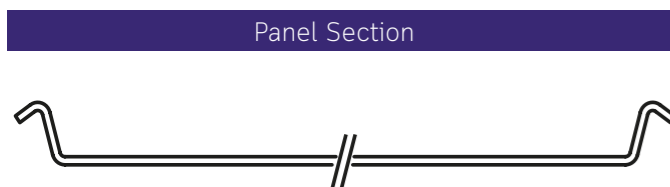
Typical Physical Properties

Properties	Method*	Conditions	Units	Value
Density	D-792		g/cm ³	1.2
Heat deflection temperature (HDT)	D-648	Load:1.82 MP	°C	135
Vicat softening temperature	D-1525	Load:1kg °C		150
Service Temperature-Short term			°C	-50 to+120
Service Temperature-Long term			°C	-50 to+100
Tensile strength at yield	D-638	10mm/min	MPa	62
Flexural strength	D-790	1 mm/min	MPa	93
Flexural modulus	D-790	1.3 mm/min	MPa	2,600
Notched impact strength Izod	D-256	23°C	J/m	800
Impact falling weight	ISO 6603/1d	3 mm sheet	J	158
Coefficient of linear thermal expansion	D-696		cm/cm°C	6.5x10 ⁻⁵
Thermal conductivity	C-177		W/m²K	0.21
Specific heat capacity	C-351		kJ/kgK	1.3

Remark :
 *Properties in the table relate to the polycarbonate glazing panels in the AMPGLAZE® system.
 *ASTM method except where noted otherwise



Panel Dimension



AMPGLAZE® 3/600 & 4/600

Panel Data	3/600**	4/600
Width	584 mm	585 mm
Height	20 mm	21 mm
Weight	2.20 kg/m	2.94 kg/m
System Weight	6.14 kg/m	7.40 kg/m

Remark : **Stock available in Thailand

Installation

Purlin and Rafter Design

Type	Rafter Centers	Multi-Span								
		Single Span (mm)			Mid-Span			End-Span (mm)		
		75kg/m ²	100 kg/m ²	125 kg/m ²	75 kg/m ²	100 kg/m ²	125 kg/m ²	75 kg/m ²	100 kg/m ²	125 kg/m ²
3/600**	3/600	900	820	760	1540*	1400	1300	1210*	1100	1020
4/600	4/600	900	820	760	1540	1400	1300	1210	1100	1020

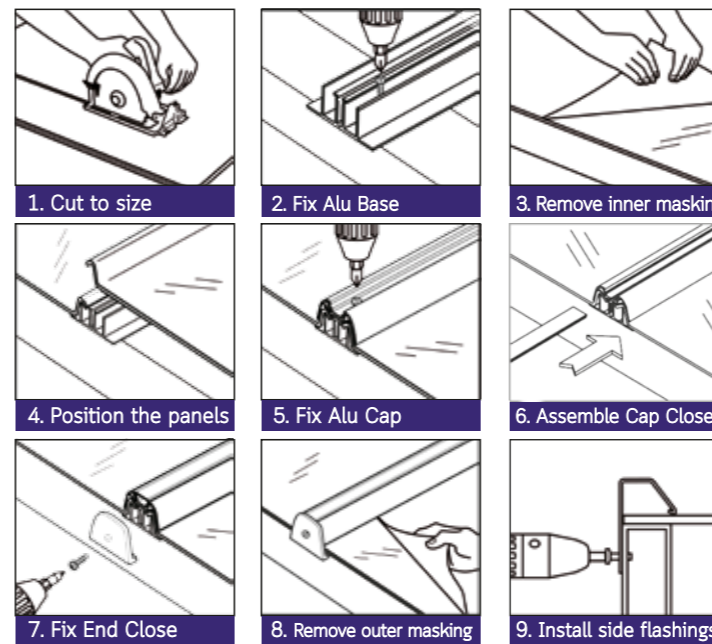
Remark : *Recommended spanning.

Cold-Curving Radius

Type	Minimum Arching Radius (mm)
3/600**	4,000
4/600	4,000

*Appropriate slope Min 5 degrees
 **Stock available in Thailand
 Other size, color required please contact Ampelite Fibreglass (Thailand).

Installation



Thermal Insulation

Thickness	AMPGLAZE® U-Value [Watts/m ² °k]	Glass U-Value [Watts/m ² °k]
3**	5.43	5.79
4	5.29	5.76

System Components

Component List	Photo
AMPGLAZE® - Panel	
Alu Base - Anodized Aluminium	
Alu Cap - Anodized Aluminium	
Cap Close - Anodized Aluminium	
End Close - Anodized Aluminium	
Locking Screw - NP 12-14x19 PAN HEAD AX @ 25 cm.	
Fixing Screw - SDP 10-24x22 WAFER AX @ Every Purlin	

Remark :
 1) In case a structure is the rafter system, please fix the Fixing screw on every 800 mm., while purlin system please fix the fixing screw on every purlin.
 2) Fix the locking screw on every 25 cm.
 3) In strong wind area, it must be fixed with FX SDP 12-14X50 HEX C3 W through close to purlin.on last purlin at end of sheet.

Color and Panel Section

Color	LT	SC
Green**	80%	0.69
Solar Control**	20%	0.42

Assembly Illustration

